

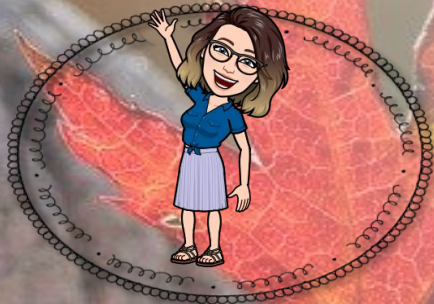
WELCOME 1<sup>ST</sup> GRADE FAMILIES!!!

Mrs. Aba



# meet the TEACHER

Mrs. Alexandra Borowski- Adams



## Welcome to 1<sup>st</sup> Grade!

I am pleased to welcome you to the 2020 - 2021 school year! I am looking forward to having your child as a student. First grade is such a fun year with so many wonderful learning activities to celebrate. In order to have a fun year, my most important goal is to create a family of learners in my classroom. I am committed to creating a classroom environment where your child is a valued, trusted, and integral part of our family of learners. In order to accomplish this, I have planned a variety of activities to emphasize and reinforce this goal. It is my hope that you will support and encourage this vision at home.

## About Me

Hello! I am Alexandra Borowski Adams and I am 26 years old. I was born in Charlotte, North Carolina! I currently live in Indian Trail with my husband, my parents and two cats, Miku and Yuki. I am a happy person who enjoys laughter, art, reading, and traveling.

I attended Wingate University where I received my Bachelors of Arts in Elementary Education. I have wanted to be a teacher since I was younger. I started my experiences in teaching since high school at CATA!

## Contact Me

704 - 750 - 9472



Schoology.com



aadams@queencitystem.org

\*Office Hours: 8 am-4 pm, Monday-Friday\*

## My Favorites

Food: Pasta



Candy: Dove Chocolate

Hobby: Traveling and reading

Color: Blue

Subject: Science



# QCSS 2020-2021 Academic Calendar

July 2020						
S	M	T	W	Th	F	S
			1	2	3	4
5	6	7	8	9	10	11
12	13	14	15	16	17	18
19	20	21	22	23	24	25
26	27	28	29	30	31	

**No School on Shaded Days**

# of School Days = 0

\*04 Independence Day

\*30 & 31 New Teacher Orientation

August 2020						
S	M	T	W	Th	F	S
						1
2	3	4	5	6	7	8
9	10	11	12	13	14	15
16	17	18	19	20	21	22
23	24	25	26	27	28	29
30	31					

**No School on Shaded Days**

Character Trait: **RESPONSIBILITY**

# of School Days = 15

\*3-10 Inservice Days

\*7 Student & Parent Orientation

\*11 First Day of School

\*17-28 Fall MAP Test Window

September 2020						
S	M	T	W	Th	F	S
		1	2	3	4	5
6	7	8	9	10	11	12
13	14	15	16	17	18	19
20	21	22	23	24	25	26
27	28	29	30			

**No School on Shaded Days**

Character Trait: **RESPONSIBILITY**

# of School Days = 20

\*7 Labor Day (No School)

\*4 MAP Data day

\*11 Progress Report

October 2020						
S	M	T	W	Th	F	S
				1	2	3
4	5	6	7	8	9	10
11	12	13	14	15	16	17
18	19	20	21	22	23	24
25	26	27	28	29	30	31

**No School on Shaded Days**

Character Trait: **RESPECT**

# of School Days = 19

\*9 End of Quarter

\*16 Parent-Teacher Conference

\*22 & 23 Teacher Workday (CSLI 2020)

November 2020						
S	M	T	W	Th	F	S
1	2	3	4	5	6	7
8	9	10	11	12	13	14
15	16	17	18	19	20	21
22	23	24	25	26	27	28
29	30					

**No School on Shaded Days**

Character Trait: **KINDNESS**

# of School Days = 15

\*11 Veterans Day (No School)

\*13 Progress Report

\*23-27 Fall Break (No School)

\*26 Thanksgiving

December 2020						
S	M	T	W	Th	F	S
		1	2	3	4	5
6	7	8	9	10	11	12
13	14	15	16	17	18	19
20	21	22	23	24	25	26
27	28	29	30	31		

**No School on Shaded Days**

Character Trait: **KINDNESS**

# of School Days = 13.5

\*1-11 Winter MAP Tests

\*18 End of Semester (Half Day)

\*Dec.21-Jan.3 Winter Break (No School)

January 2021						
S	M	T	W	Th	F	S
						1
2	3	4	5	6	7	8
9	10	11	12	13	14	15
16	17	18	19	20	21	22
23	24	25	26	27	28	29
30	31					

**No School on Shaded Days**

Character Trait: **COURAGE**

# of School Days = 18

\*4 MAP Data day

\*5 Classes Resume

\*18 MLK Day (No School)

February 2021						
S	M	T	W	Th	F	S
						1
2	3	4	5	6	7	8
9	10	11	12	13	14	15
16	17	18	19	20	21	22
23	24	25	26	27	28	29
30	31					

**No School on Shaded Days**

Character Trait: **INTEGRITY**

# of School Days = 19

\*5 Progress Report

\*15 Enrollment Lottery

\*15 Teacher Workday

March 2021						
S	M	T	W	Th	F	S
						1
2	3	4	5	6	7	8
9	10	11	12	13	14	15
16	17	18	19	20	21	22
23	24	25	26	27	28	29
30	31					

**No School on Shaded Days**

Character Trait: **HONESTY**

# of School Days = 22

\*12 End of Quarter

\*19 Parent-Teacher Conference

April 2021						
S	M	T	W	Th	F	S
						1
2	3	4	5	6	7	8
9	10	11	12	13	14	15
16	17	18	19	20	21	22
23	24	25	26	27	28	29
30	31					

**No School on Shaded Days**

Character Trait: **CITIZENSHIP**

# of School Days = 15

\*Apr02-09 Spring Break (No School)

\*22 Progress Report

\*23 Teacher Workday

May 2021						
S	M	T	W	Th	F	S
						1
2	3	4	5	6	7	8
9	10	11	12	13	14	15
16	17	18	19	20	21	22
23	24	25	26	27	28	29
30	31					

**No School on Shaded Days**

Character Trait: **PERSEVERANCE**

# of School Days = 18.5

\*3-14 MAP Tests/Finals

\*13 Teacher Workday

\*28 Last Day of School (Half Day)

\*31 Memorial Day

June 2021						
S	M	T	W	Th	F	S
						1
2	3	4	5	6	7	8
9	10	11	12	13	14	15
16	17	18	19	20	21	22
23	24	25	26	27	28	29
30	31					

**No School on Shaded Days**

# of School Days = 0

\*1-4 Teacher Workdays

☐	Teacher Work Days					
☐	No School Days	# of Days Per Quarter	42	40.5	47	45.5
★	First & Last Day of School	# of Days Per Semester	82.5	92.5		175

**Class 1C**

**Office Hours: 8 am – 4 pm, Monday – Friday**

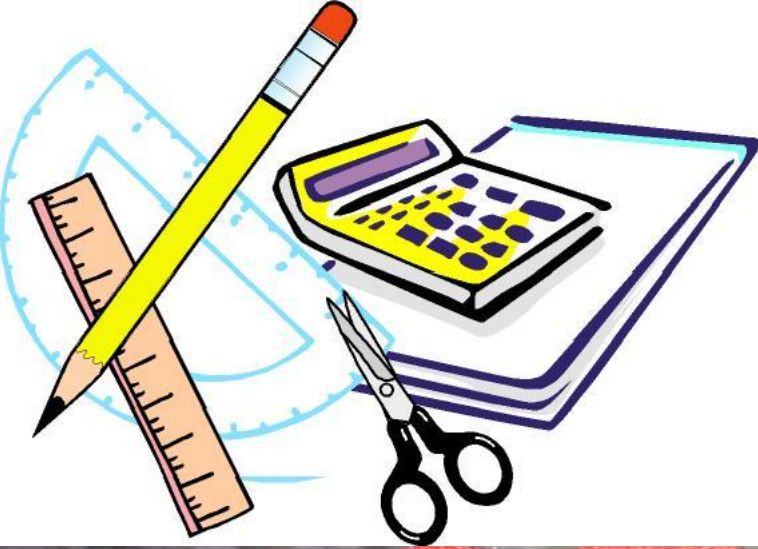
**\*Excluding Holidays and Breaks\***

**Instructional Times: 9 am – 2 pm**



# REMOTE SCHEDULE

1			
School Starts	9:00 AM		Minutes
ELA	9:00	9:30	30
Math	9:40	10:10	30
Science	10:20	10:50	30
Social Studies	11:00	11:30	30
Specials	11:30	11:50	20
Lunch	11:50	12:45	
Physical Activity/Homework/On-on-One with Teacher	12:45	2:00	75
School Ends	2:00		215



## REMOTE SUPPLY LIST

- LAPTOP or TABLET
- COMPOSITION NOTEBOOK
- PENCILS
- CRAYONS
- SCISSORS
- GLUE STICKS
- CONSTRUCTION PAPER

# SUPPLIES



# READING

We will be working on skills regarding language, reading, and answering questions relating to the story.

Students will be given time to work on Independent Reading and other activities to help with literacy skills.





# WRITING

We will be working on the different structures of sentence and what is needed for it to be a complete sentence.

We will also be working on spelling words correctly, either by sight words or sounding out the word.

Students will be completing a variety of writing styles to become well rounded authors!

Students are going to build on the Math skills that they have been working on since Kindergarten! We are now going to be adding in the tens, we can add and subtract within a hundred, **FLUENTLY!**

- \* We will be working on time within half hour and hour.
- \* We will be working on measurement (how long or short something is), knowing which one is more/less or the same.
- \* Word Problems (Add and subtract – two to three numbers)
- \* Shapes (2D and 3D)

# MATH







# SCIENCE



\*Earth in the Universe; Force and Motion; Safety; Molecular Biology; Ecosystems; Earth Systems, Structures, and Processes.

\*We will also be working on STEM activities, project materials are optional when the time comes!

# SOCIAL STUDIES

**\*We will be working on Character Education, community building, and writing activities such as pen pals to communicate with other first grade classes 😊**

## **Character Education Calendar:**

**August- Responsibility**

**September- Responsibility**

**October-Respect**

**November- Kindness**

**December- Kindness**

**January- Courage**

**February- Integrity**

**March- Honesty**

**April- Citizenship**

**May- Perseverance**



# GRADES



TESTS: 30%

QUIZZES: 20%

PROJECTS: 25%

CLASSWORK/PARTICIPATION: 20%

HOMEWORK: 5%

LEVEL 4- ABOVE GRADE LEVEL

LEVEL 3- ON GRADE LEVEL

LEVEL 2- SLIGHTLY BELOW GRADE LEVEL

LEVEL 1- BELOW GRADE LEVEL



# REMOTE LEARNING RESOURCES

## **Schoology**

Here you will find posted assignments for all subjects (ELA, Math, Science, and Social Studies), grades, announcements, and other additional information.

## **RazKids**

Here you will find a virtual leveled library and book assignments (quizzes). Please use this tool to access books for your child to practice.

## **eSparks**

Here you will find engaging videos for ELA and Math subjects. This resource is self-directed as it works with your child's level while providing challenging material to help them progress.

## **Prodigy**

Here you will find engaging math games and quizzes. This resource is self-directed and provides challenging material as well as engaging incentives to improve your child's math skills.

# Schoology Access Codes!

**ELA Access Code:** 88NM-7F9Z-XPWPG

**Math Access Code:** HPT7-JQWJ-8FDMH

**Science Access Code:** SVRF-H52S-FB6P2

**Social Studies Access Code:** QTRG-Q3Q2-QMNR4



## **All Other Accounts**

**All the other accounts will be emailed to you personally! If you have any questions, please contact me and I will get back with you promptly!**

**Thank you!**

# Classroom ZOOM Rules



Show up a few minutes before class time and wait to be admitted into the class.



Find a quiet place free of distractions. (siblings, television, parents, pets, etc.)



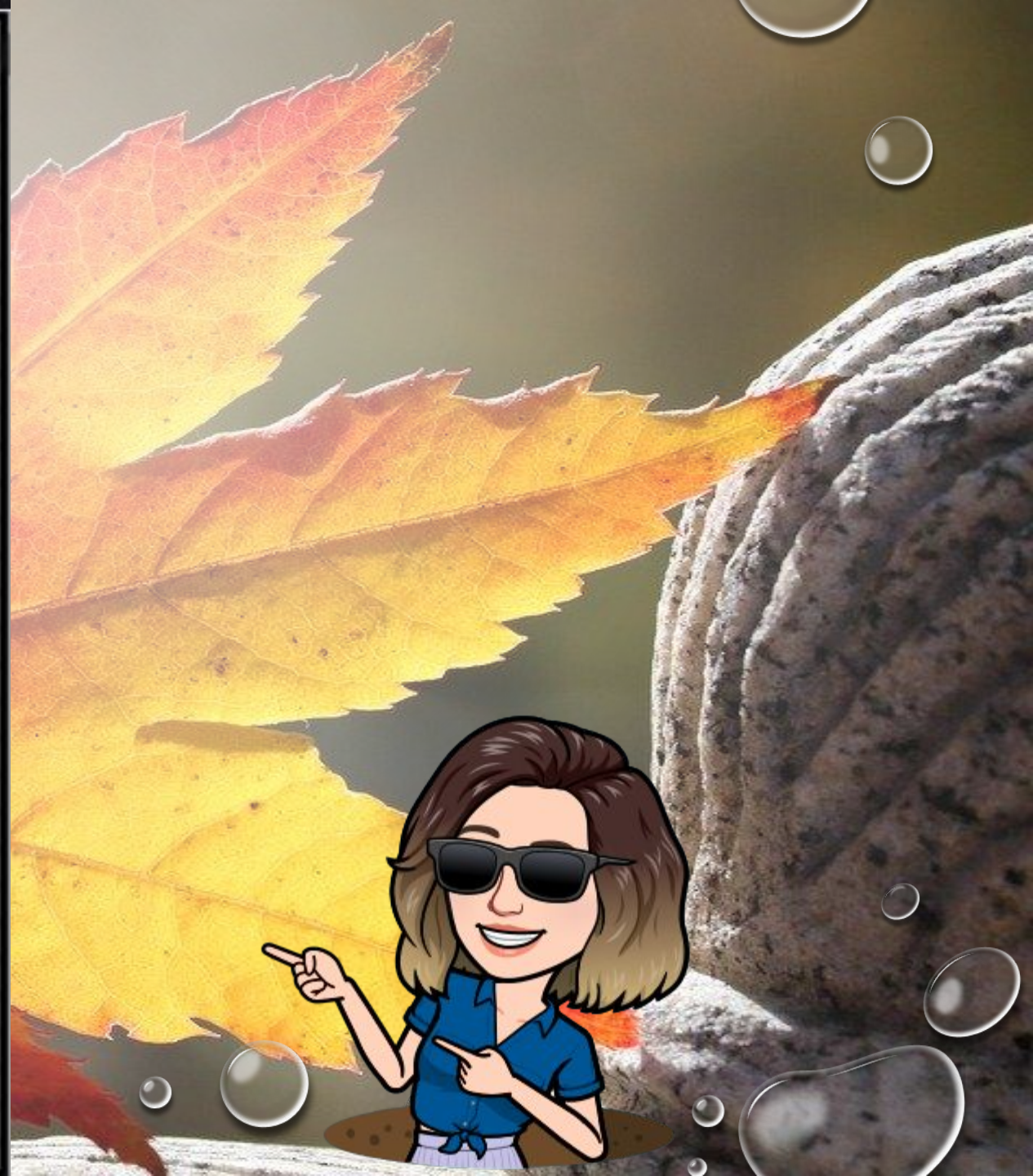
Be respectful at all times. While your video is on, no hand gestures or inappropriate language.



Stay on mute. Click the "raise hand" button if you have a question or something to share.



Stay focused and on task so you don't miss anything the speaker says.





# CLASSROOM RULES

1. ALWAYS BE POLITE AND KIND
2. BE RESPECTFUL TO OTHERS
3. LEARN FIRST, PLAY LATER
4. BE HONEST
5. HAVE SAFE HANDS, SAFE FEET,  
AND SAFE WORDS

# RULES







What upsets your child?

What motivates your child?

Any personal or medical issues that should be brought to our attention?

Are there holidays your child does not celebrate?

Anything else you would like us to know about your child?

Additional comments/concerns:



<https://mrsabaclass.weebly.com/resources.html>

# QUESTIONS

